

**Most recent population estimate (US Census 2006) for Williamson County: 353,830**

**2005 Population Estimates**

Area	Population
Round Rock	81,639
Williamson County	328,421
Texas	22,270,165

Source: US Census American Community Survey

**2000 and 2005 Population Estimates by Area (Eastern Williamson County)**

Area	2000 <sup>1</sup>	January 2006 <sup>2</sup>	% Change 00-06
Bartlett	1,675	1,843	10%
Granger	1,299	1,495	15%
Jarrell	N.A.	1,408	N.A.
Taylor	13,575	14,872	10%
Thrall	710	891	26%
Weir	591	737	25%
<b>Williamson County</b>	<b>249,967</b>	<b>342,419</b>	<b>37%</b>

<sup>1</sup>Source: US Census 2000

<sup>2</sup>Source: Texas State Data Center (<http://txsdc.utsa.edu/>)

**2000 Population Estimates by Age (Western vs. Eastern Williamson County)\***

Area	<5	5 - 9	10 - 14	15 - 19	20 - 64	65+
Western Williamson County	18,844 (8.7%)	18,714 (8.7%)	17,845 (8.3%)	15,289 (7.1%)	130,733 (60.6%)	14,221 (6.6%)
Eastern Williamson County	2,478 (7.2%)	2,678 (7.8%)	2,791 (8.1%)	2,563 (7.5%)	19,643 (57.2%)	4,168 (12.1%)
<b>Texas</b>	<b>7.8%</b>	<b>7.9%</b>	<b>7.8%</b>	<b>7.8%</b>	<b>58.7%</b>	<b>9.9%</b>
<b>United States</b>	<b>6.8%</b>	<b>7.3%</b>	<b>7.3%</b>	<b>7.2%</b>	<b>58.9%</b>	<b>12.4%</b>

Source: US Census

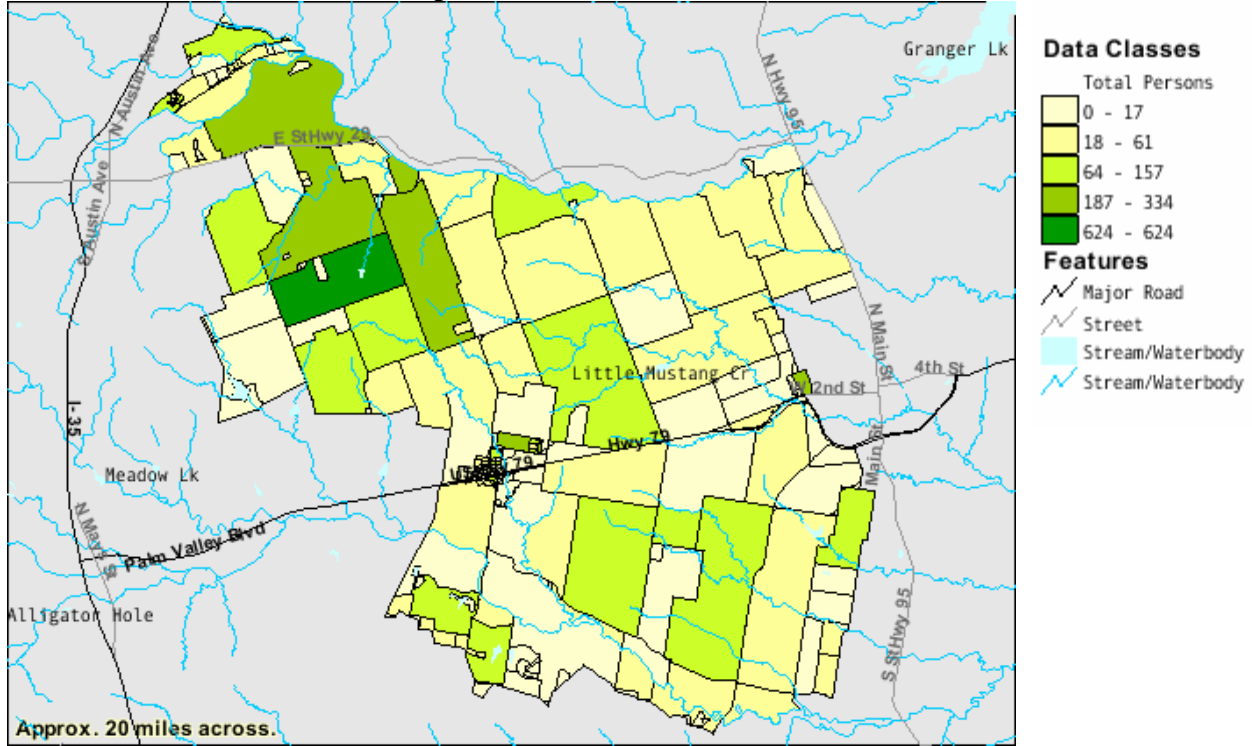
\*Eastern Williamson County includes 2000 Census Tracts 208.01, 209, 210, 211, 212.01, 212.02, 212.03, 213, and 216. Western Williamson County all remaining 2000 Census Tracts.

**2000 Population Estimate for Western Williamson County = 215,646**

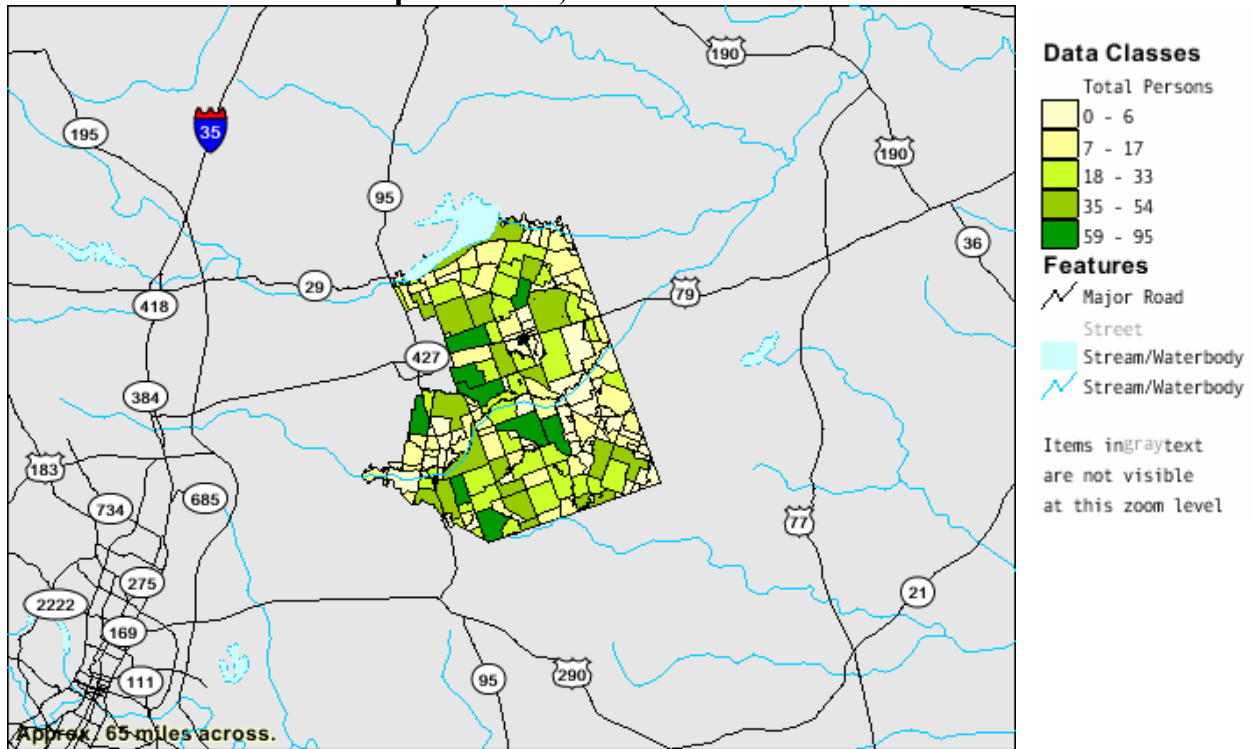
**2000 Population Estimate for Eastern Williamson County = 34,321**

2000 Population Estimates by Census Tract and Block Group (Eastern Williamson County)

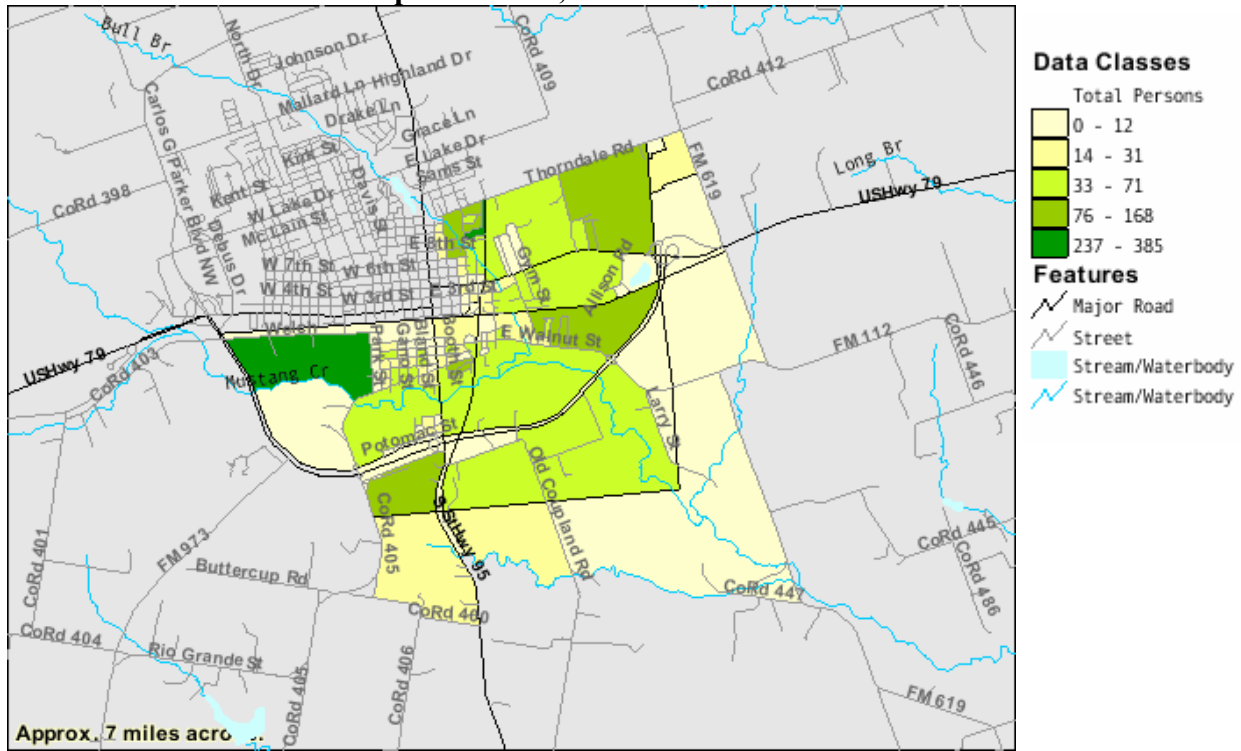
Census Tract 208.01—Total Population = 6,410



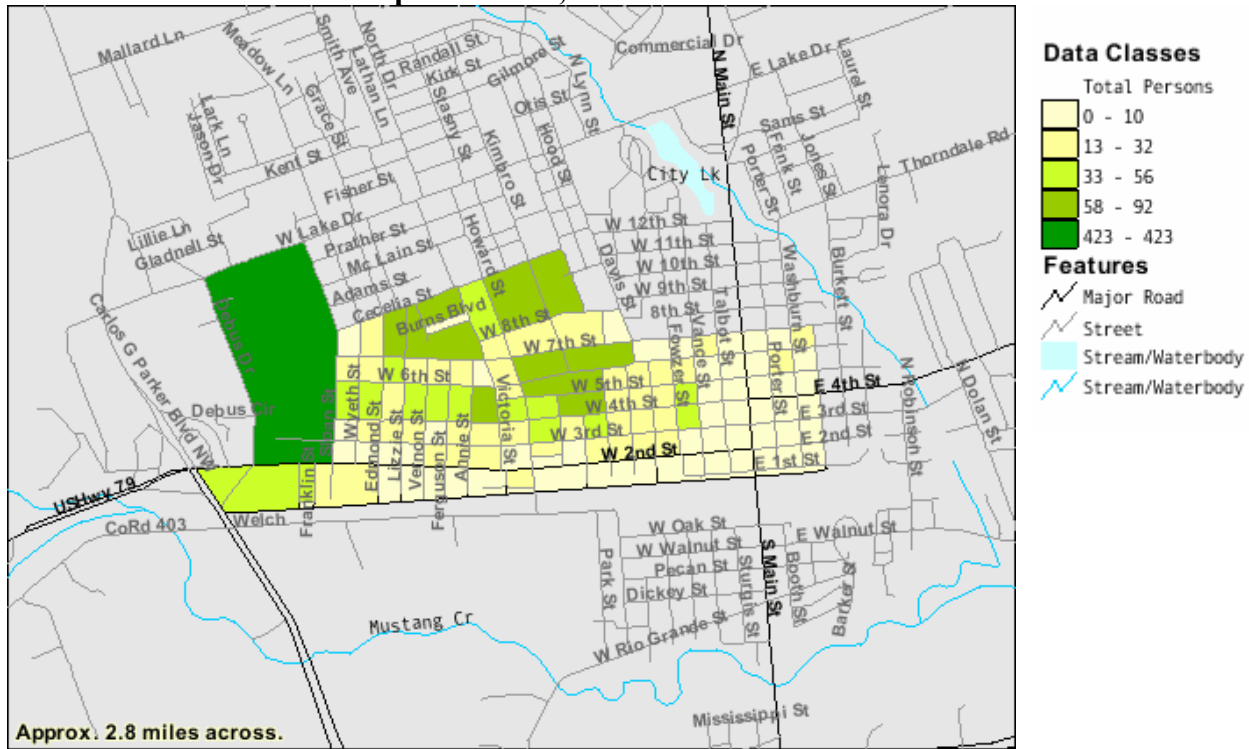
Census Tract 209—Total Population = 3,983



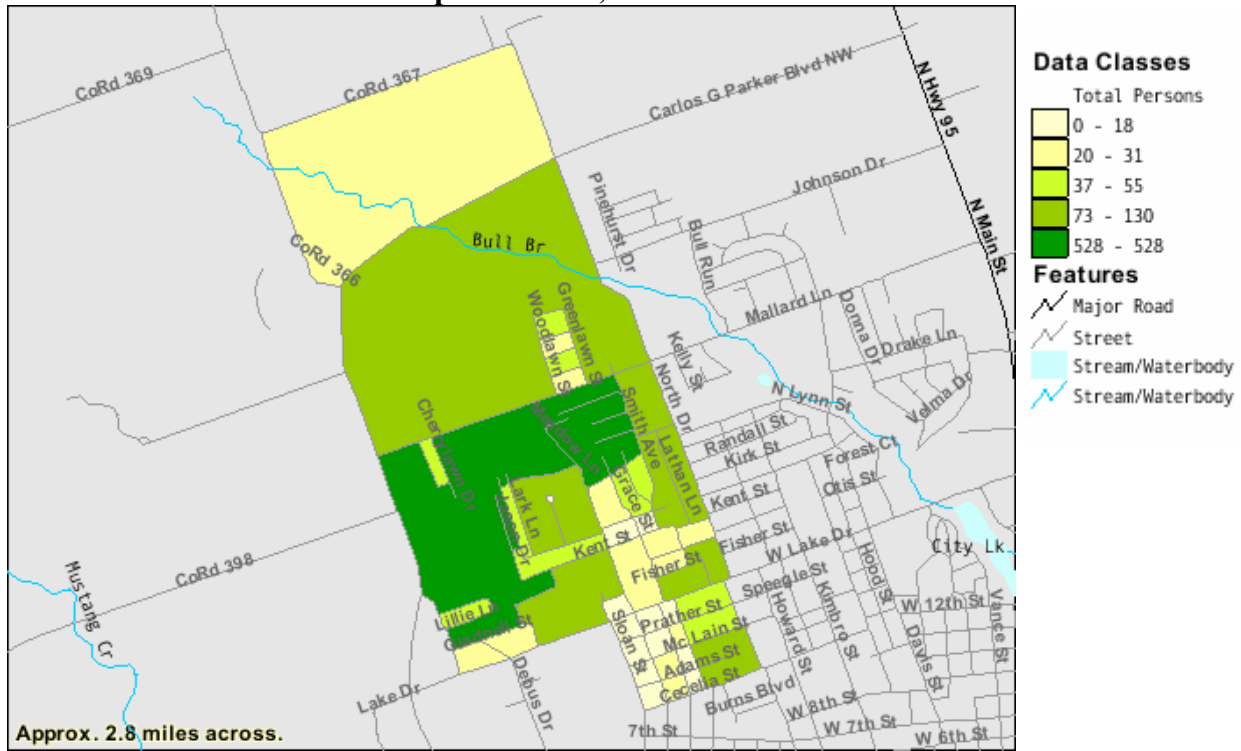
**Census Tract 210—Total Population = 3,564**



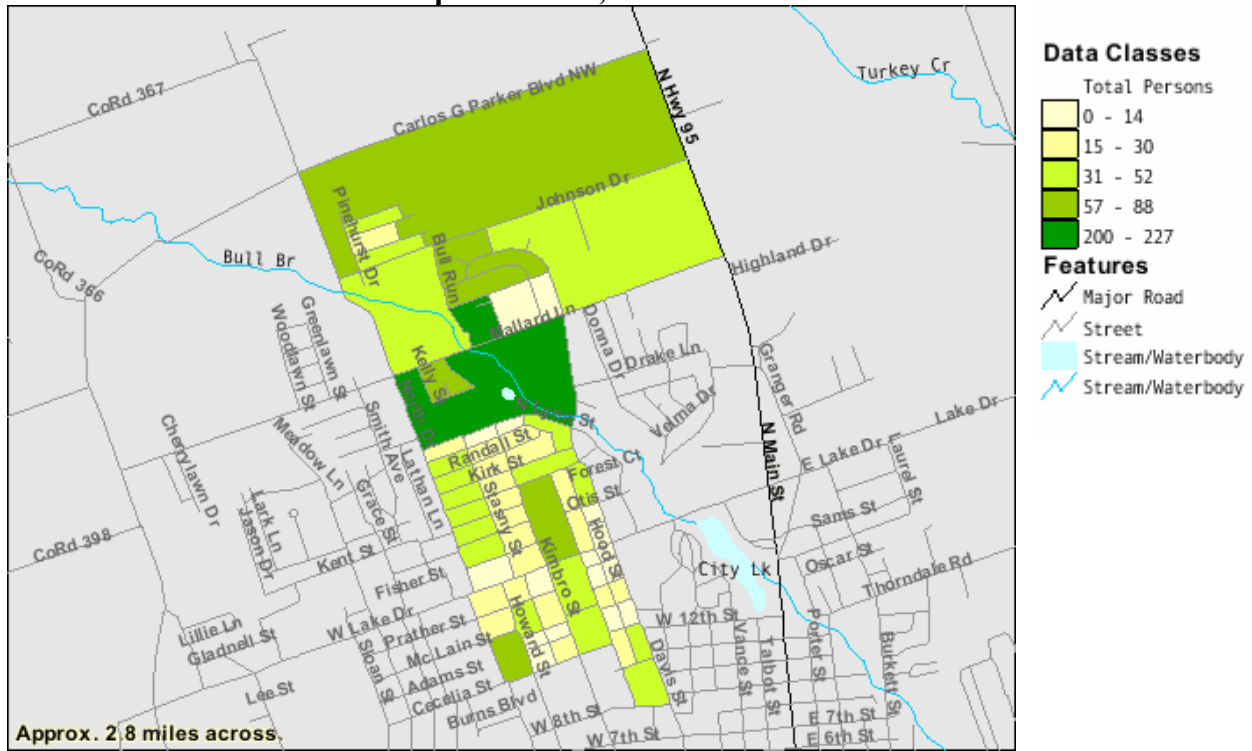
**Census Tract 211—Total Population = 2,766**



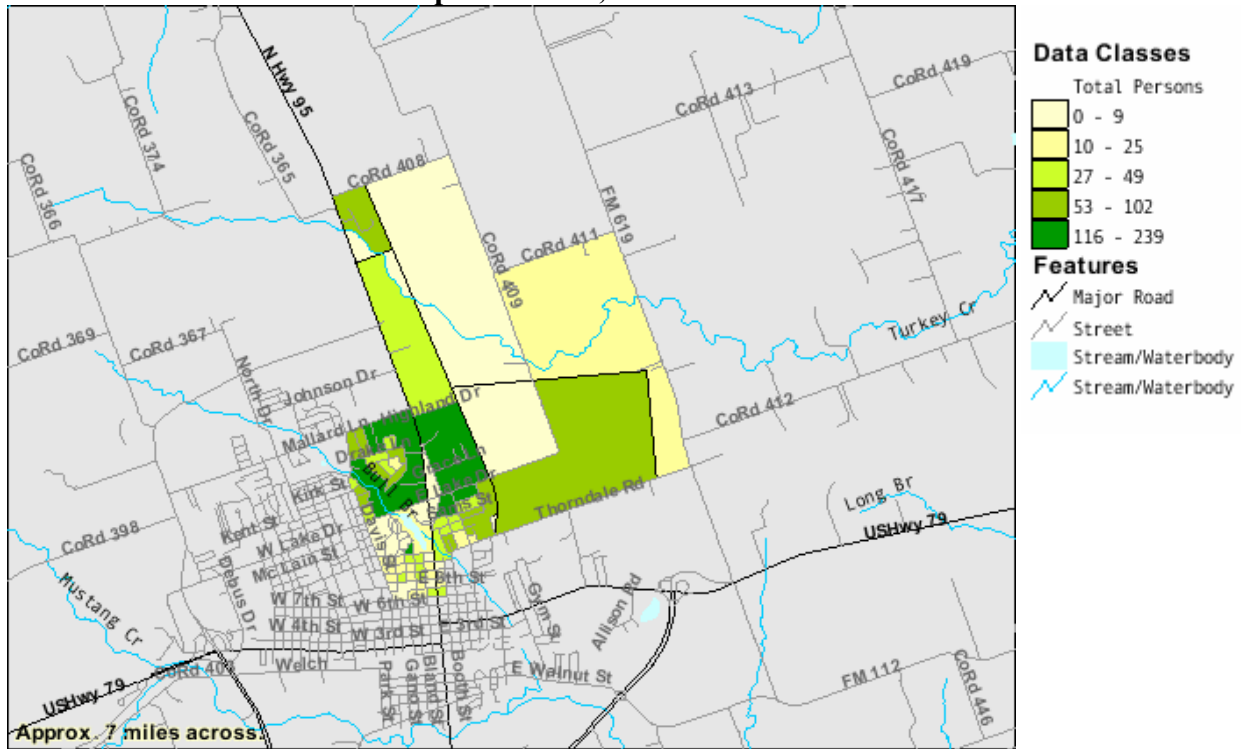
**Census Tract 212.01—Total Population = 2,187**



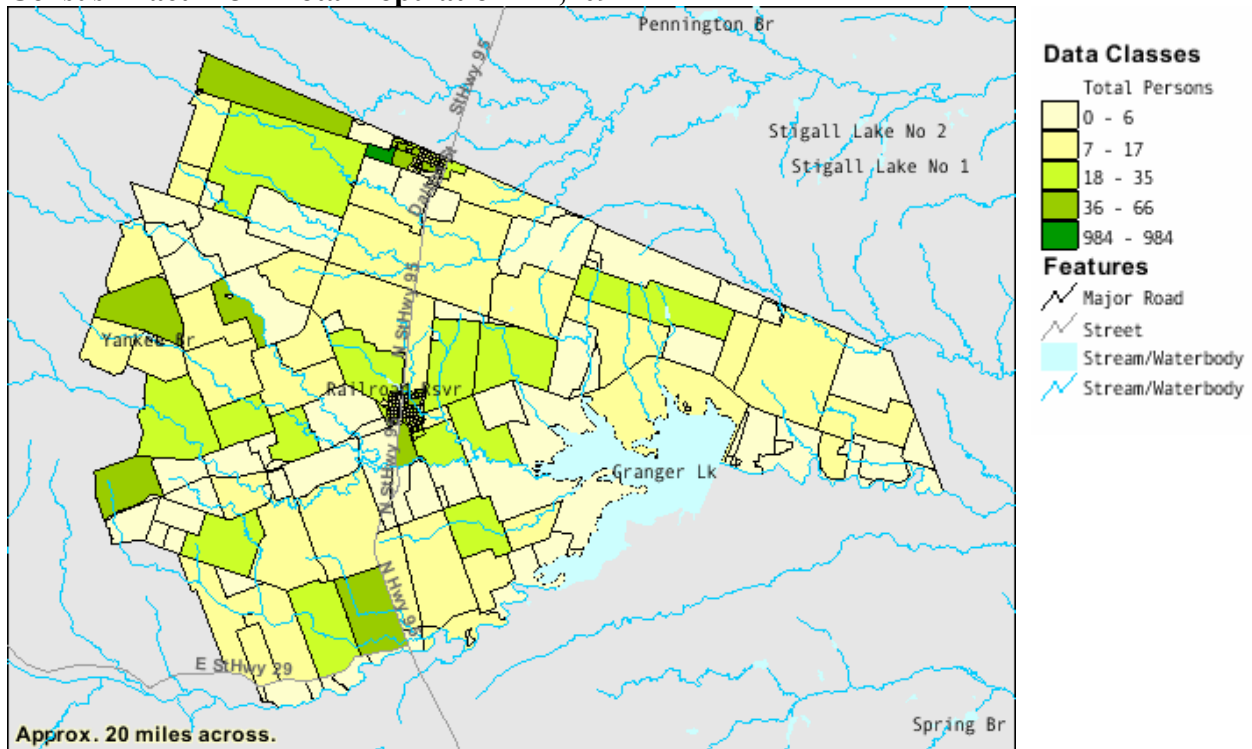
**Census Tract 212.02—Total Population = 2,214**



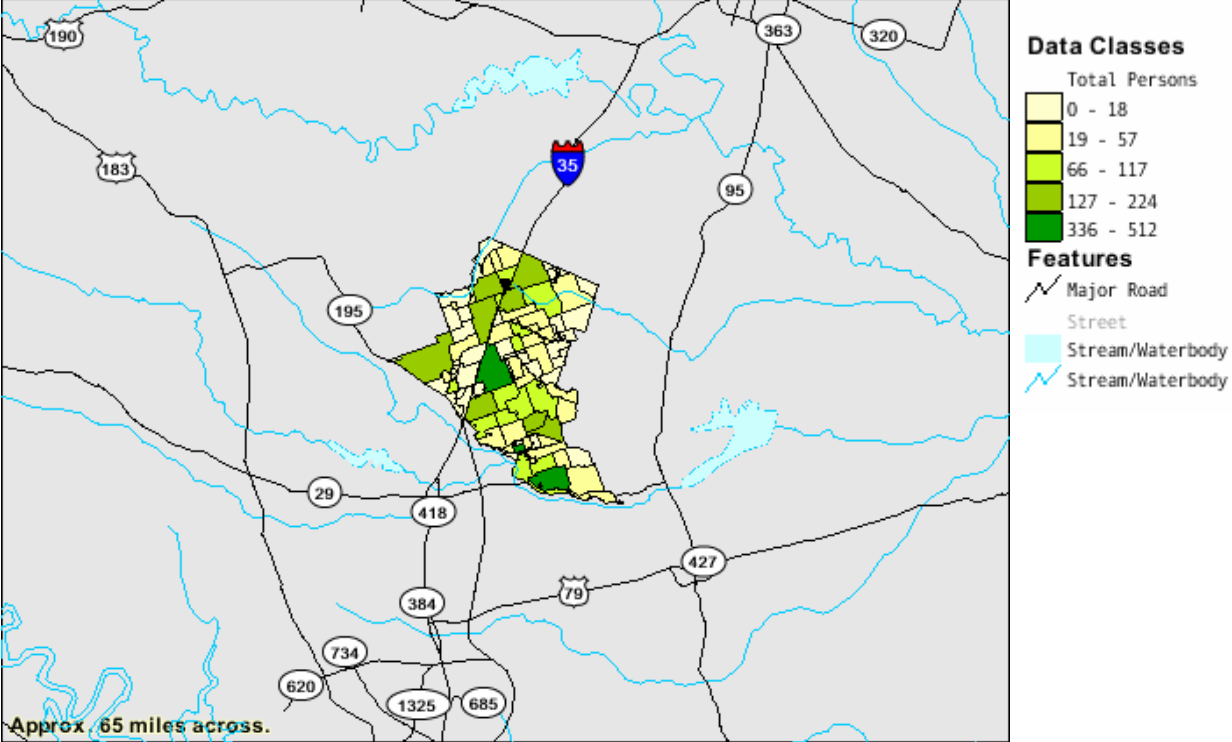
**Census Tract 212.03—Total Population = 2,704**



**Census Tract 213—Total Population = 4,409**

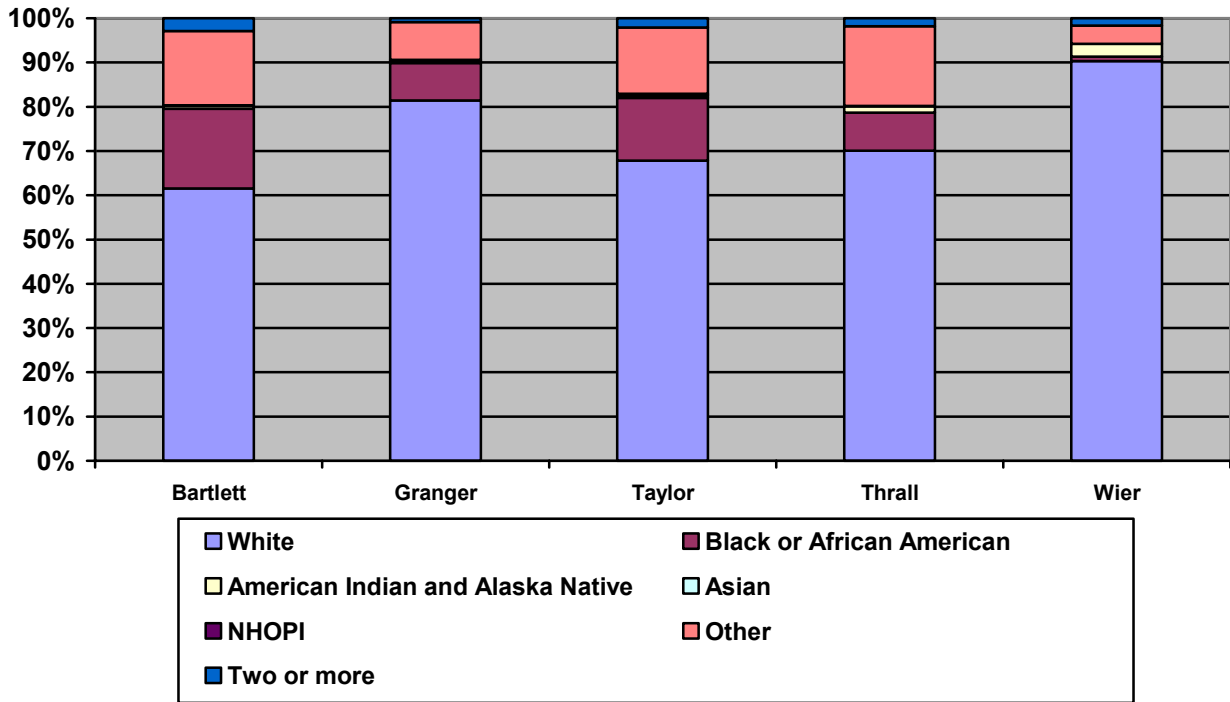


**Census Tract 216—Total Population = 6,084**



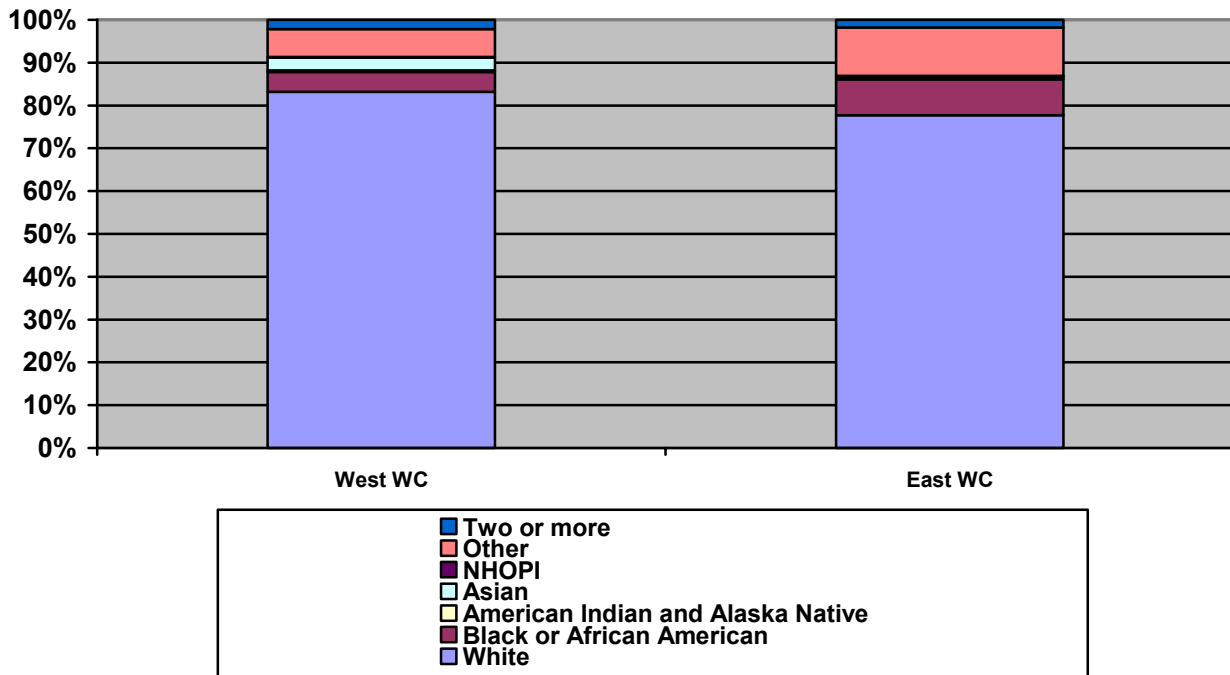
### 2000 Race by Area

Source: US Census 2000



### 2000 Race—Western vs. Eastern Williamson County

Source: US Census 2000



### 2000 Eastern Williamson County Ethnicity (Hispanic) by Area

Source: US Census 2000

<b>Area</b>	<b>Hispanic Population (%)</b>
Bartlett	554 (33.1%)
Granger	330 (25.4%)
Taylor	4,626 (34.1%)
Thrall	255 (35.9%)
Weir	100 (16.9%)
<b>Williamson County</b>	<b>42,990 (17.2%)</b>

### 2000 Ethnicity—Western vs. Eastern Williamson County

Source: US Census 2000

<b>Area</b>	<b>Hispanic Population (%)</b>
Western Williamson County	34,248 (15.9%)
Eastern Williamson County	8,739 (25.5%)

## POVERTY ESTIMATES

### 2005 Williamson County % of Families, Individuals, and Children Living in Poverty

Source: US Census American Community Survey

Area	Families	Individuals	Less than Age 18	Age 5 - 17	Age 18+	Age 65+
Williamson County	4.3%	5.9%	7.6%	4.4%	5.3%	3.9%
Texas	14.2%	17.6%	24.9%	22.8%	14.8%	12.7%
United States	10.9%	13.3%	18.5%	17.0%	11.6%	9.9%

### 2004 Eastern Williamson County Children in Poverty by School District

Source: Small Area Income and Poverty Estimates (SAIPE) Program, U.S. Census Bureau

School District	Children Ages 5-17 in Poverty
Taylor	957 (25%)
Granger	124 (21%)
Jarrell	108 (12%)
Thrall	64 (10%)
Coupland	11 (5%)

**% People Under the Poverty Level Estimate for Eastern Williamson County = 10.0%**

**% People Under the Poverty Level Estimate for Western Williamson County = 4.0%**

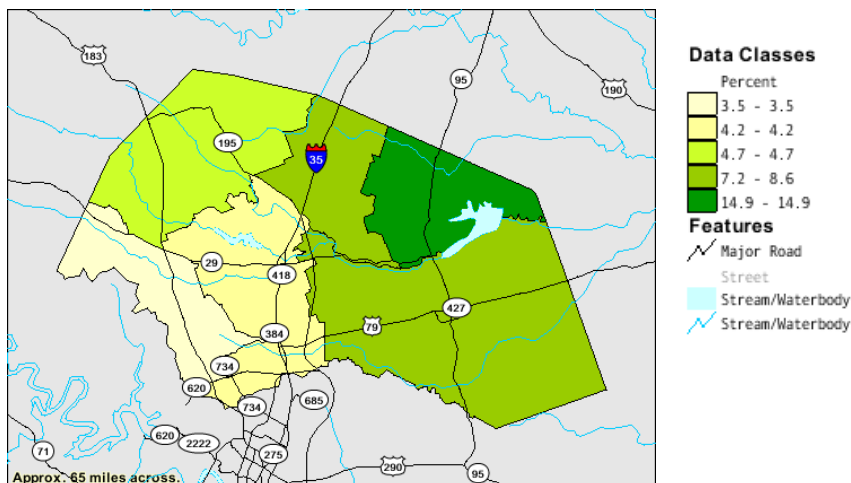
### 2000 Families, Individuals, and Children Living in Poverty

Source: US Census 2000

Area	Families	Individuals	Less than Age 18	Age 5 - 17	Age 18+	Age 65+
Bartlett	88 (21.1%)	406 (35.6%)	134 (29.5%)	105 (31.6%)	267 (23.7%)	74 (30.3%)
Granger	34 (11.5%)	149 (12.0%)	52 (12.6%)	40 (12.9%)	97 (11.7%)	36 (21.3%)
Taylor	365 (10.5%)	1831 (14.2%)	687 (18.1%)	450 (16.1%)	1127 (12.4%)	188 (11.0%)
Thrall	24 (12.4%)	136 (19.2%)	40 (20.7%)	28 (19.7%)	96 (18.6%)	26 (21.5%)
Weir	7 (3.6%)	32 (5.2%)	10 (5.9%)	0	22 (4.9%)	0
Williamson County	2,272 (3.4%)	11,735 (4.8%)	3,973 (5.4%)	2,623 (5%)	7,537 (4.4%)	980 (5.9%)
<b>Texas</b>	<b>12.0%</b>	<b>15.4%</b>	<b>20.2%</b>	<b>19.3%</b>	<b>13.3%</b>	<b>12.8%</b>
<b>United States</b>	<b>9.2%</b>	<b>12.4%</b>	<b>16.1%</b>	<b>15.4%</b>	<b>10.9%</b>	<b>9.9%</b>

### Percent of People Below the Poverty Level in 1999 (by County Subdivision)

Source: US Census 2000



## MEDIAN FAMILY INCOME ESTIMATES

### **2005 Median Family Income Estimates**

Source: US Census American Community Survey

<b>Area</b>	<b>Median Income (Dollars)</b>
Round Rock	\$69,662
Williamson County	\$71,503
Texas	\$49,769
United States	\$55,832

### **2000 Median Family Income Estimates by Area**

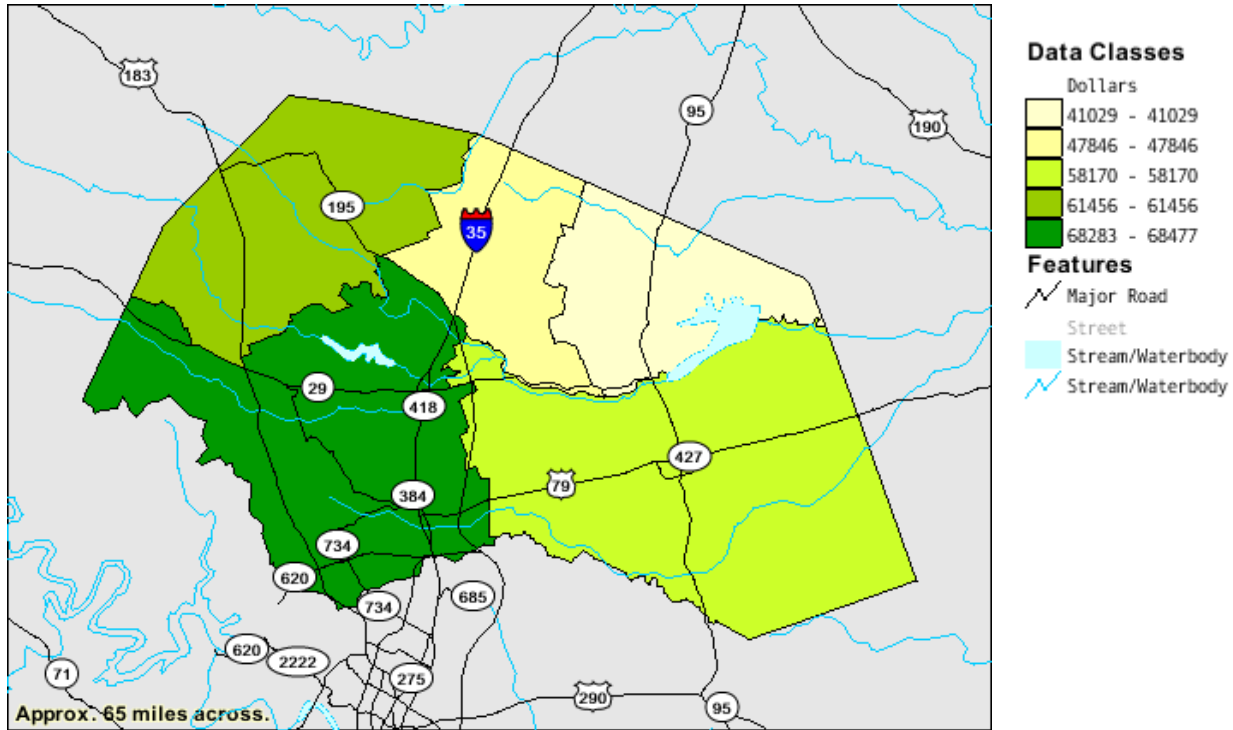
Source: US Census 2000\*

<b>Area</b>	<b>Median Family Income</b>
Bartlett	\$35,595
Granger	\$37,188
Taylor	\$46,604
Thrall	\$36,845
Weir	\$47,813
Williamson County	\$66,208
Texas	\$45,861
United States	\$50,046

\*Data unavailable for Jarrell and Coupland

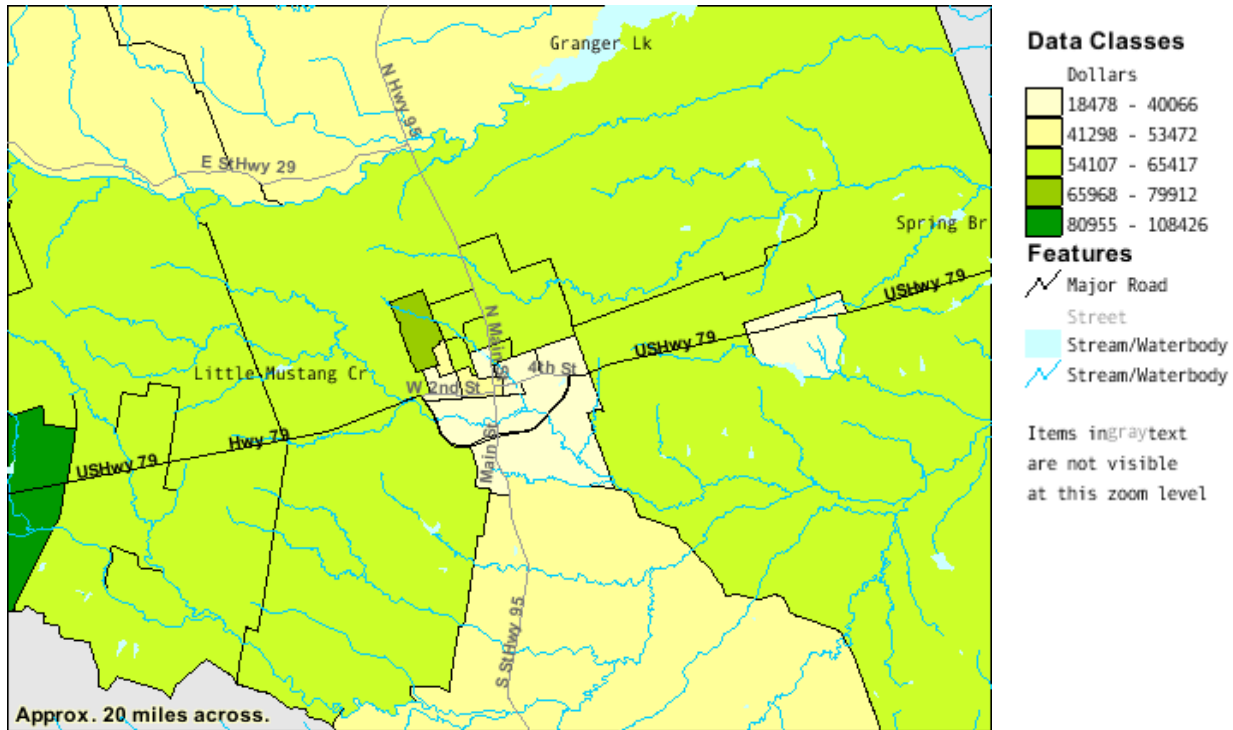
### Williamson County Median Family Income in 1999 by County Subdivision

Source: US Census 2000



### Taylor/Thrall Area Median Family Income in 1999 by Block Group

Source: US Census 2000



# Granger/Bartlett Median Family Income in 1999 by Block Group

Source: US Census 2000

